

Technical Data Sheet

Peter Kwasny GmbH, Heilbronner Str. 96
74831 Gundelsheim / Germany
Phone: +496269 95-0, Fax: +496269 95-80
www.spraymax.com / www.kwasny.com / info@kwasny.de

MULTONA

Car paint spray close to the original color

400 ml

Art. Nr. 601000



Product

Description / Purpose

The MULTONA spray paint range includes a total of 407 different shades and one 2-layer clear coat (Art. no. 600999).

MULTONA shades are approximate shades and NOT original shades. It contains a wide range of colors with current color trends automotive industry.

Current and common automotive colors are regularly assigned to the MULTONA system.

For painting car parts, trucks and commercial vehicles as well as construction and agricultural machinery. For small to medium paint repairs and can also be used in creative and decorative areas.

Available in numerous RAL tones and special corporate colors.

Properties

- Simple processing
- Very good history
- Good adhesion, very productive
- Fast drying
- Low sagging
- Fan spray head
(adjustable horizontally and vertically)
- Outstanding painting results
- Universally applicable

Material base

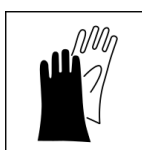
Nitro combination resins (395 shades)
Acrylic resin (12 shades + clear coat)

Substrate

Sheet metal, metal and plastic
(after using Auto-K Plastic Adhesion Promoter)

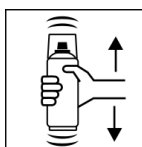
Processing

Protection measures



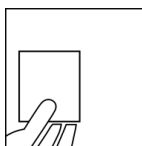
Wear personal protection equipment.
(gloves / goggles)
For more information, see safety data sheet.

Shake



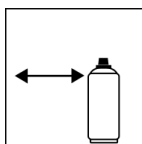
Shake can thoroughly for 2 minutes
- starting from when the mixing balls are heard.

Spray to test



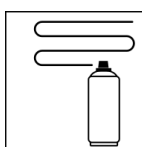
Test spray after shaking the can - compatibility with
the respective substrate as well as Check hue.

Spraying distance



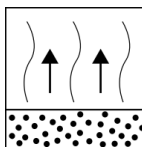
15 cm - 25 cm
Hold the can as upright as possible.

Spray passes



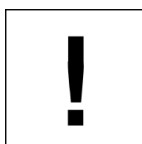
2 - 3 spray coats: approx. 50 - 60 µm
Crossing means spraying on an initially horizontal
and then a vertical layer.

Flash-off time



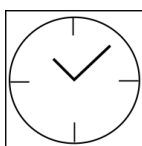
Flash time: approx. 2 - 3 min between the
spray coat.

Processing conditions



Optimum application at 18° C - 25° C.
The substrate must be dry and free of dust and
grease.

Drying



dust dry: 15 - 20 min
dry to touch: after 60 min.
fully dried: after 12 hours

Continue

Paintwork metal / sheet metal damage:

1. Auto-K special primer
(optional, depending on need/damage: e.g. Auto-K Anti-corrosion primer, filler / primer, spray spatula)
2. MULTONA car paint (shade)
3. MULTONA 2-layer clear coat
(mandatory for the following listed items or recommended as an option all other shades)

Paintwork plastics:

1. Auto-K Plastic Adhesion Promoter
(mandatory, plastic on Check compatibility!)
2. MULTONA car paint (shade)
3. MULTONA 2-layer clear coat
(mandatory for the following listed items or recommended as an option all other shades)

Recoat with itself at any time.

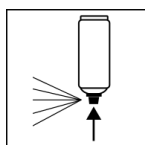
With clear coat at any time (Multona clear coat)

PLEASE NOTE! The following listed MULTONA shades / articles MUST BE painted over with MULTONA 2-layer clear coat (Art. no. 600 999).
Art.-no.: 600581, 600582, 600699, 601222, 601223, 601225, 601226, 601227, 601228, 601229, 601230 and 601231.

With all other MULTONA paint sprays, overcoating with clear paint is not absolutely necessary.

Nevertheless, we recommend overcoating with Multona 2-layer clear coat (Art. no. 600 999), to increase gloss and weather resistance.

Finish



After finishing the painting process can turn over and spray valve empty to turn on to avoid sticking of the spray valve.

Additional Information

Important Information

MULTONA 400 ml shades are approximate shades and NOT original shades.

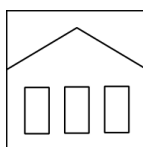
PLEASE NOTE!

The MULTONA colors / articles listed under "PAINT PREPARATION" MUST BE painted over with MULTONA 2-layer clear coat (Art. No. 600 999).

Check plastic substrates for compatibility.

DO NOT spray on synthetic resin painted surfaces, as the paint may pull up.

Shelf Life



The can is upright, dry and protected from chemical and mechanical influences to be stored and transported between 15 - 25° C.

The safety instructions on the can as well as all legal provisions of the storage location to note.

Disposal



The completely emptied spray cans must be disposed of in the recycling system. Cans with hardened material must be disposed of as special waste.

Note

Before use, the safety instructions must always be read carefully and observed.

The contents in this technical data sheet were created with great care and reflect our current state of knowledge. They provide the user with application-specific information and do not promise certain properties. The information is non-binding and we accept no liability for its integrity, accuracy and completeness. They do not relieve the user of their duty to check the suitability of our product for the intended purpose. The warnings printed on our labels must be respected. Our brands and patents are protected by copyright. All rights reserved We reserve the right to update, amend or supplement the content of the information without prior notice.